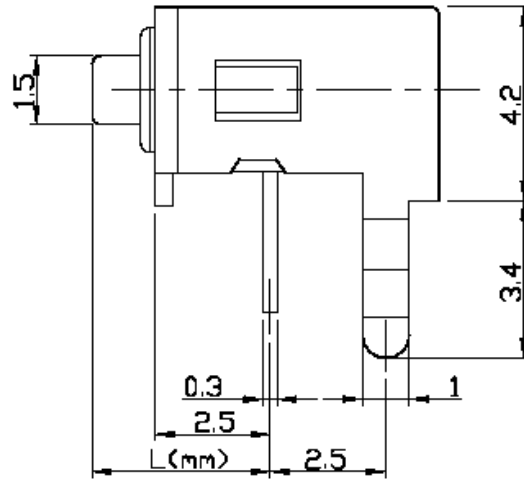
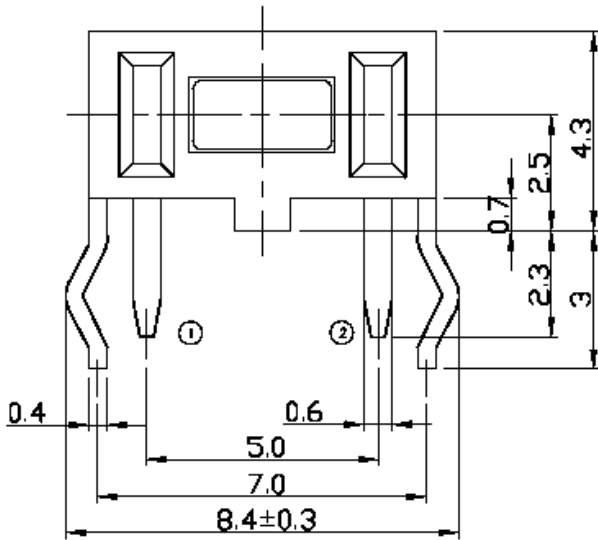
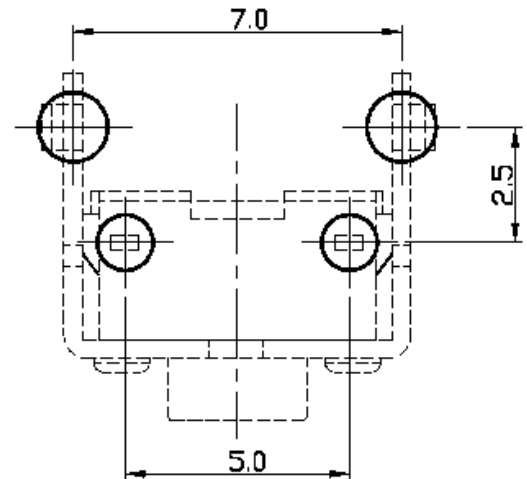
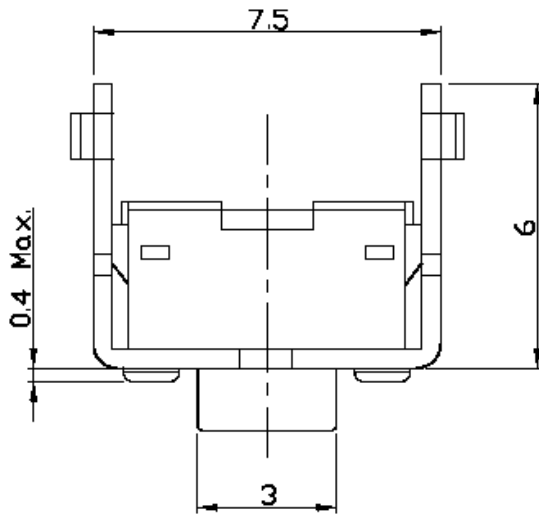


DIMENSIONS

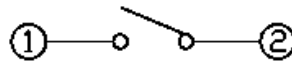


P.C.B MOUNTING PATTERN DIMENSION

The following soldering patterns are recommended for reflow soldering



CIRCUIT DIAGRAM



SPECIFICATION

- RATING : DC 12V, 50mA Max.
- CIRCUIT : 1C-1P
- OPERATING FORCE : 100, **N=160±30gf** or R=250±50gf
- CONTACT RESISTANCE : 100mΩ Max.
- TRAVEL : 0.25±0.1 mm Cycles Min.
- LIFE : 30,000 (250gf) Cycles Min. / 50,000 (100, 160gf) Cycles Min.

		5	Contact	Stainless	SUS301-EH	Ag clad	
		4	Stem	PA66	2411GF6 BRT		
		3	Cover	Brass	C2680gf6 BRT		
	TS15-B	3.85	2	Case	PA66	2411GF6 BRT	Ag plating
	TS15-A	3.15	1	Terminal	Brass	C2680R-EH(t0.3)	
MODEL NO.	L(mm)	NO	Parts Name	Material	Specification	Remark	



銓基電子股份有限公司
ROKI ELECTRONICS CO., LTD.

PART NAME : TACT SWITCH

SCALE :

PART NO : TS15-□□-S-PF

UNIT : mm

TOLERANCE : ±0.3 mm



VER : R02